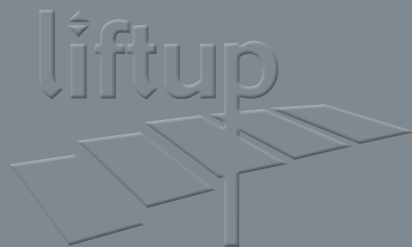


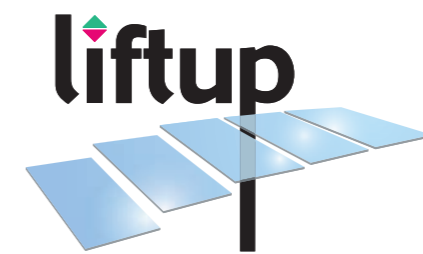
EQUAL OPPORTUNITIES

FLEXSTEP

BY LIFTUP

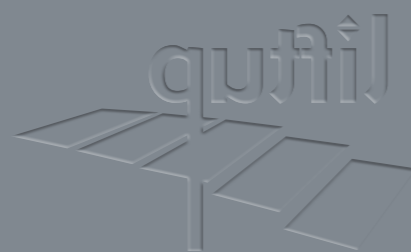


DEALER INFORMATION



Liftup A/S

Hagensvej 21
9530 Støvring
Denmark
www.liftup.dk



AT LIFTUP, WE WANT TO CREATE IMPROVED ACCESSIBILITY IN PUBLIC AND PRIVATE BUILDINGS

It may be a challenge to enter an old building if the entrance is situated above street level. It may also be a challenge to get from one level to the next inside the building. Our solutions are made to overcome such challenges with respect for architectural design and layout of the room.



We have designed and are manufacturers of the FlexStep which is an ordinary staircase in a timeless design which can be adapted and tailored to individual requirements. At the touch of a button, the staircase is converted into a lift which safely and comfortably takes the user up or down.

The FlexStep can be installed without the need for major interventions in the existing building. This means that we offer a 'plug and play' installation which requires no conversion or change of the building's and the room's layout. Additionally, as the FlexStep is a 2-in-1 solution, it allows for optimal space utilisation.

ARCHITECTURE



“We needed both a staircase and a lift but did not have room for both. We found a solution working as both – a FlexStep where the staircase is converted into a lift, whenever the user activates the function.”

- Quote, H+ Arkitekter,
Conversion of the City Court of Copenhagen

DIGNIFYING SOLUTIONS

H+ ARKITEKTER focuses on creating accessibility solutions which appear as a natural part of the building's interior design. In this way, they create humane accessibility solutions for users with physical disabilities as they will not be “exhibited” on a hideous platform or have to gain access by secondary routes around the building.



“The FlexStep was adapted to the rest of the interior, among others with wooden rails in the colour we wanted. Hence the accessibility solution obtained the same high-quality level as the rest of the work we had performed.”

- Jesper Wegener,
partner and architect, H+ARKITEKTER

ACCESS

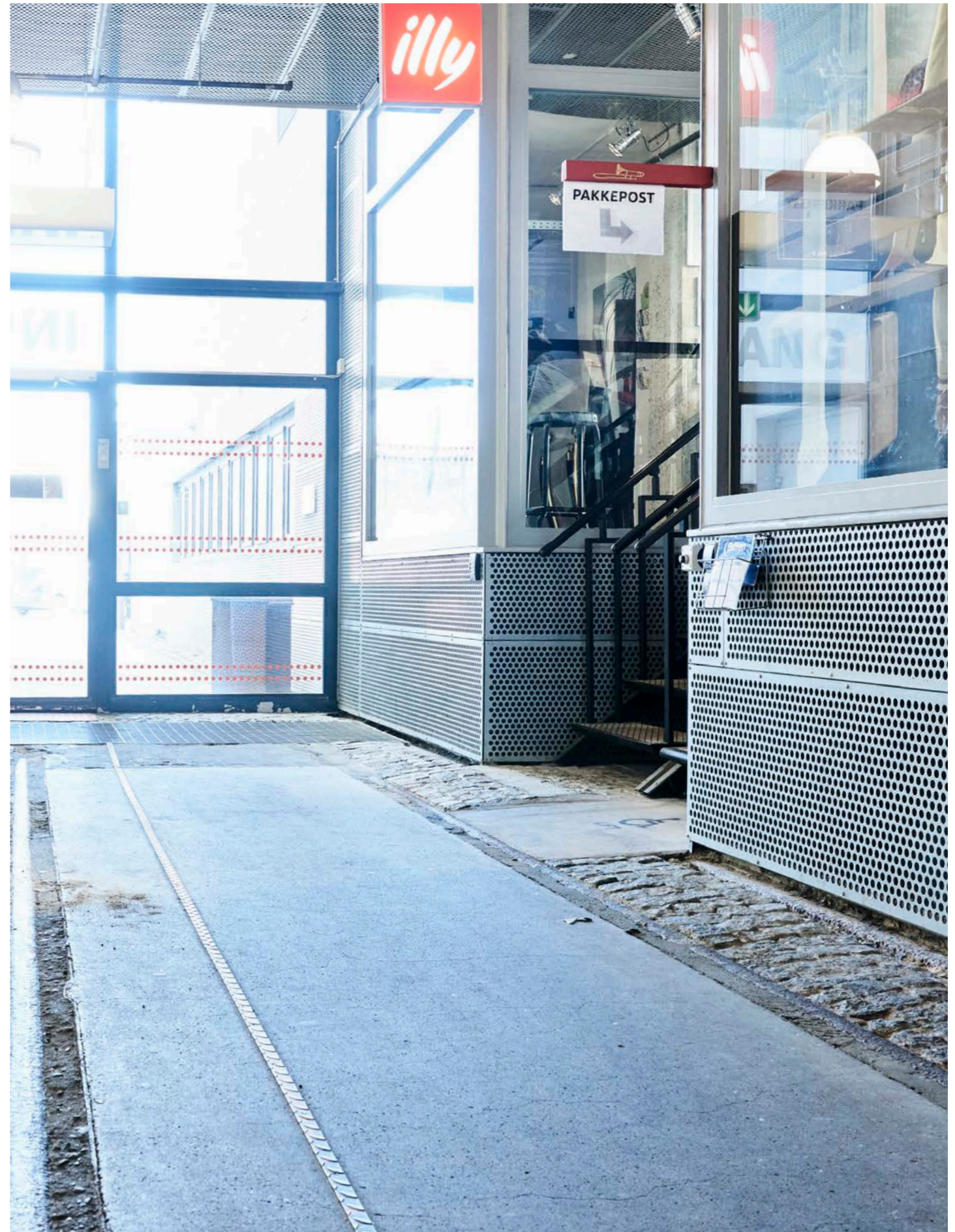
DESIGN



The FlexStep can be designed and adapted according to the requirements of the architect or the builder. As standard, the FlexStep is supplied in painted steel, but steps and handrails can be adapted to match other elements of the architecture or interior design.

As an example, it is possible to recap aesthetical details from the room or building in the design of the staircase lift; it could be a special outline characteristic of the room being incorporated in the steps of the staircase lift or a special colour of the balustrades creating a common thread and a whole.

The design can be customized to accommodate preferences regarding wood, steel and metal on the steps as well as requirements for design, material and colour of the handrails. The various components may contribute to providing details to the FlexStep design which makes it an attractive solution when converting old buildings with lack of space and different levels from earlier changes or merged rooms. When renovating a protected building, it may be paramount to install a solution offering only insignificant changes to the building or its layout.



FlexStep

The FlexStep is modular and the various combination options make it possible to design the FlexStep from thousands of configurations.

Liftup always supplies 3D drawings visualizing the chosen solution, and on request we provide 3D models (BIM) which can be integrated into the architectural systems. Moreover, we supply samples of colour and material prior to the projecting phase.



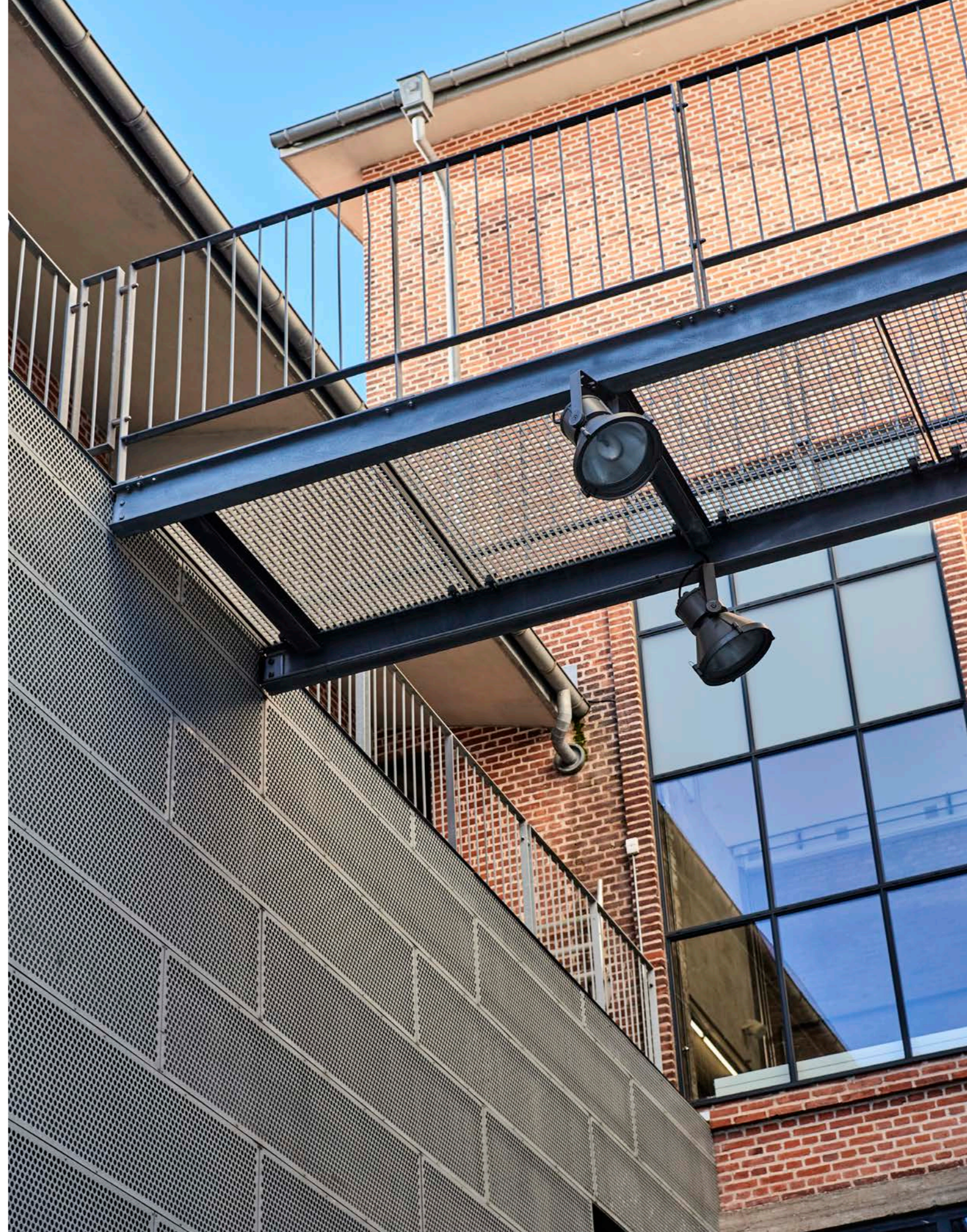
AALBORG

DENMARK

NORDKRAFT

Aalborg, Denmark

- The combination of a fixed staircase and a FlexStep provides two identical staircases in front of the entrance
- Optimized space utilization
- Robust construction
- Matching the architecture of the old power station
- Meeting legal requirements



MODERN CULTURE CENTRE

Nordkraft is an old power station converted into a modern culture centre in Aalborg (Denmark). It goes without saying that the architecture is special as a major part of the previous power station has been maintained and now makes out the rustic framework for culture to prosper.

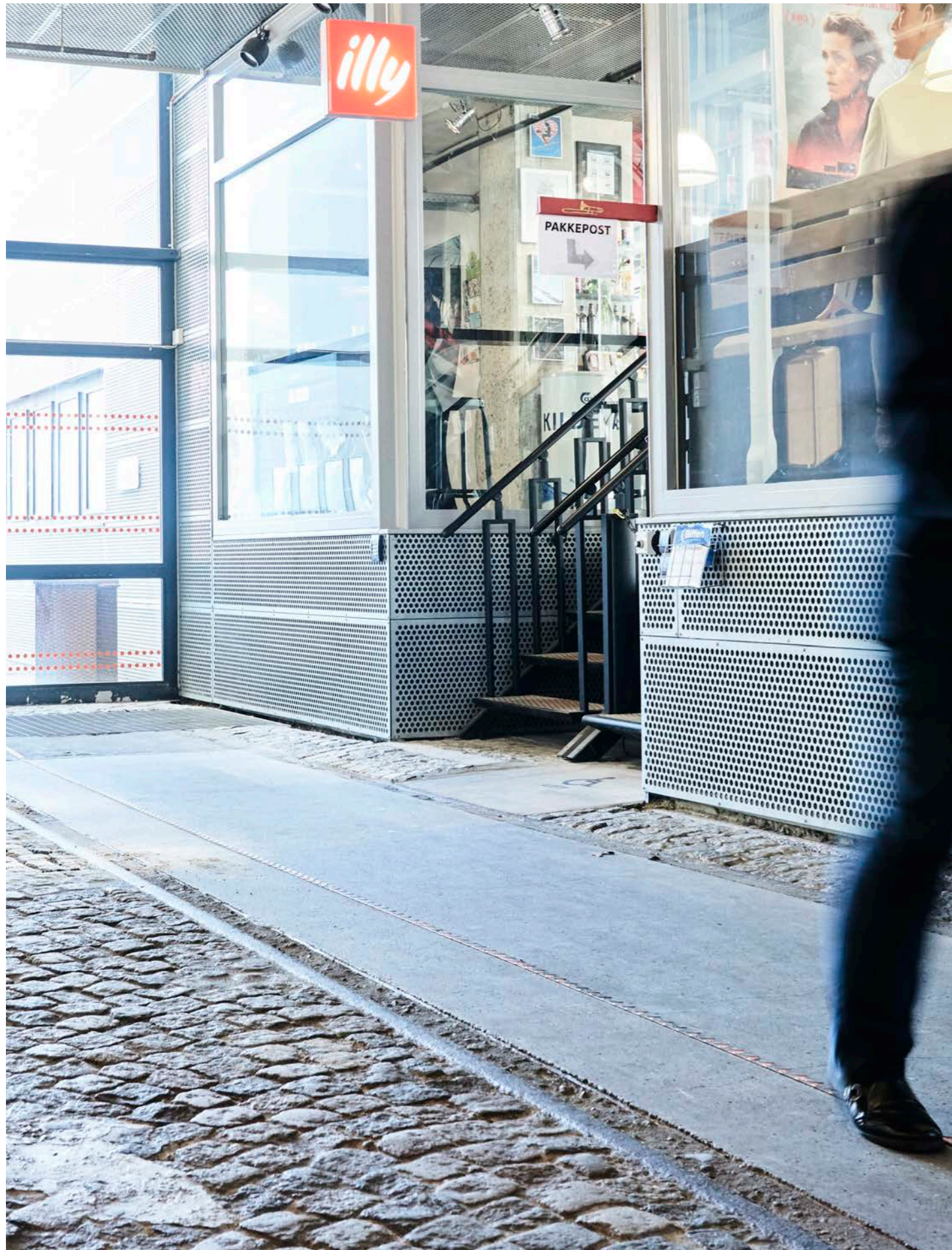
Nordkraft houses the cinema 'Biffen', and when events and film showings are organized, many visitors come by all at one time and therefore a functional solution is necessary allowing for accessibility while still maintaining the aesthetics.

FUNCTIONAL DESIGN

At the entrance to the cinema, two staircases have been installed in order to make the most of the space. The installation is a combination of a fixed staircase and a FlexStep. In other words, beside the FlexStep which works as a platform lift, a fixed staircase has been installed with the same design and appearance thereby making room for many visitors at the same time, e. g. at the end of a film performance.

Both staircases are designed in a black painted steel construction, square balustrades, round steel handrails and steps with a non-skid checker plate not only offering safety, but also providing a rustic and industrial appearance matching the interior and architecture of the rest of the culture centre.





LEGAL REQUIREMENTS AND INDUSTRIAL DESIGN

In order to meet the legal requirements for accessibility into public buildings, the builder and Aalborg Community requested the installation of a platform lift.

The architects in charge of the project were keen to integrate the wheelchair stairlift into the existing design, and in course of this process Liftup came to visit several times and supplied 3D drawings as well as dimensional drawings to the architect to warrant the requested result.

Choice of colour and materials was made according the specifications of the architect, and Liftup among other things designed a special "outdoor" version as the staircase is situated close to an exit and without insulation.

COPENHAGEN

DENMARK



THE DANISH PARLIAMENT, CHRISTIANSBORG

Copenhagen, Denmark

- Four FlexStep installations
- Fixed service agreement
- Respect for the historical buildings
- Design in massive oak to match the flooring
- Adjusting differences of level



FLEXSTEP IN CHRISTIANSBORG

Christiansborg Palace is the home of the Danish Parliament in the heart of Copenhagen City, and as most people are aware, the buildings are both historical and majestic. The rooms in Christiansborg Palace are unique and worth preserving, and therefore it is essential to show respect whenever the old palace buildings are renovated or modernized.

Members of Parliament occupy most of the rooms in the building for offices and conference rooms, and long halls connect ministerial offices etc. Here the FlexStep offers the possibility to overcome differences in levels – also for wheelchair users.



AN INTEGRATED SOLUTION IN COOPERATION WITH THE ARCHITECT



When the architect responsible for Christiansborg Palace was on the lookout for an integrated solution offering access to both pedestrians and persons with reduced mobility to the assembly rooms of the Danish Parliament, he chose a FlexStep from Liftup.

“Aesthetically fine solutions with the possibility to make adaptations, low expenses for resulting repair work, smooth installation.”

- Henrik Levison, house architect

RESPECTING ATMOSPHERE AND STYLE

In order to create optimal accessibility and access for wheelchair users and the walking impaired, the wide six-step staircase descending to the assembly room of the Danish Parliament was divided at the middle, and a FlexStep was installed.

The design was based on the beautiful old floor boards which were reused as step inserts in the new FlexStep solution. As a finishing touch the stairlift was equipped with brass handrails matching the other staircase handrails perfectly. In addition to the installation in the assembly rooms, Liftup has installed 3 more FlexSteps at other positions in the Palace.



PARIS

FRANCE



DJI STORE PARIS

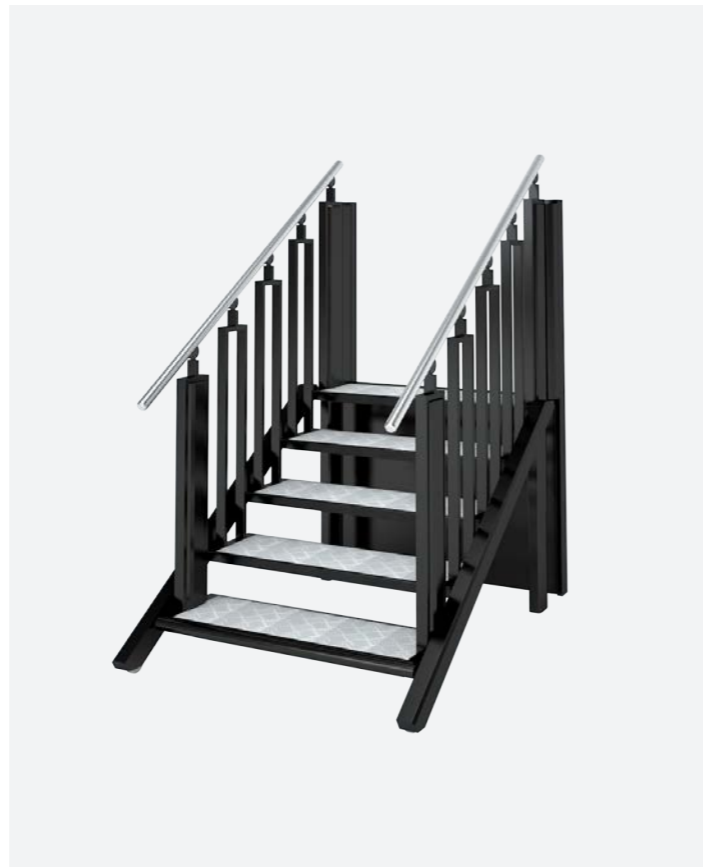
Paris, France

- A space-saving installation
- 2-in-1 solution
- A smart solution
- Matching the interior and style of the store
- Special dull black colour



FLEXSTEP IN PARIS

The drone store in Paris is located on one of the busiest streets of the city, and the boutique demonstrates a strict, modern design. DJI Store offers a grand selection of the newest technology in drones, stabilizers and DJI cameras. The store is sited in an old classical building, but the style and interior of the store itself are minimalistic and clear-cut.



HIGH-TECH DESIGN

In view of the modern style of the store and the high-tech products offered, the installation and the design of the FlexStep were kept in plain colours and materials to support its manifestation.

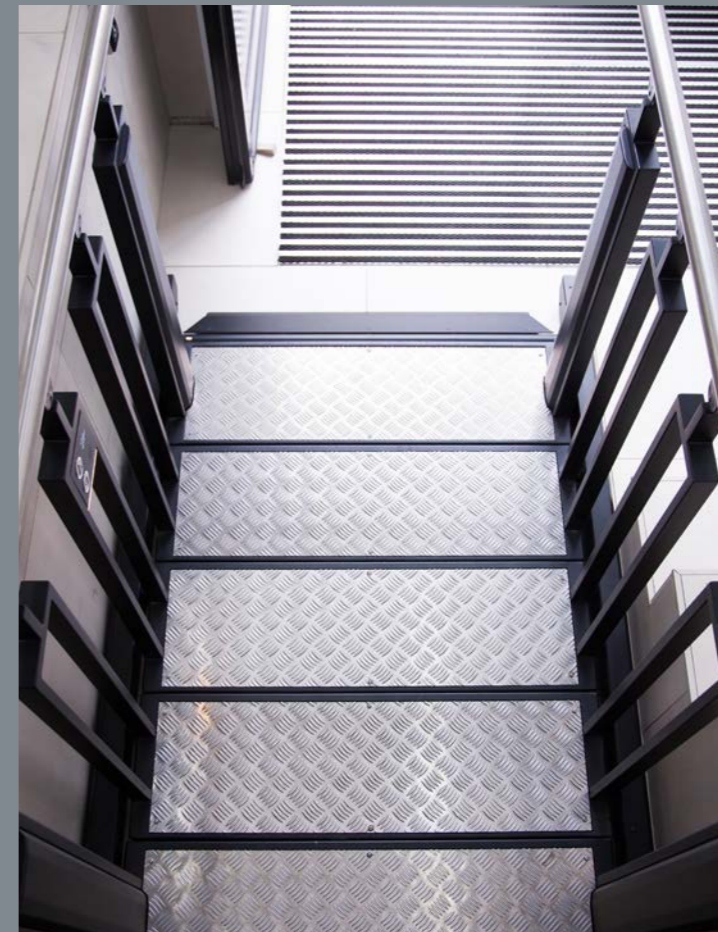
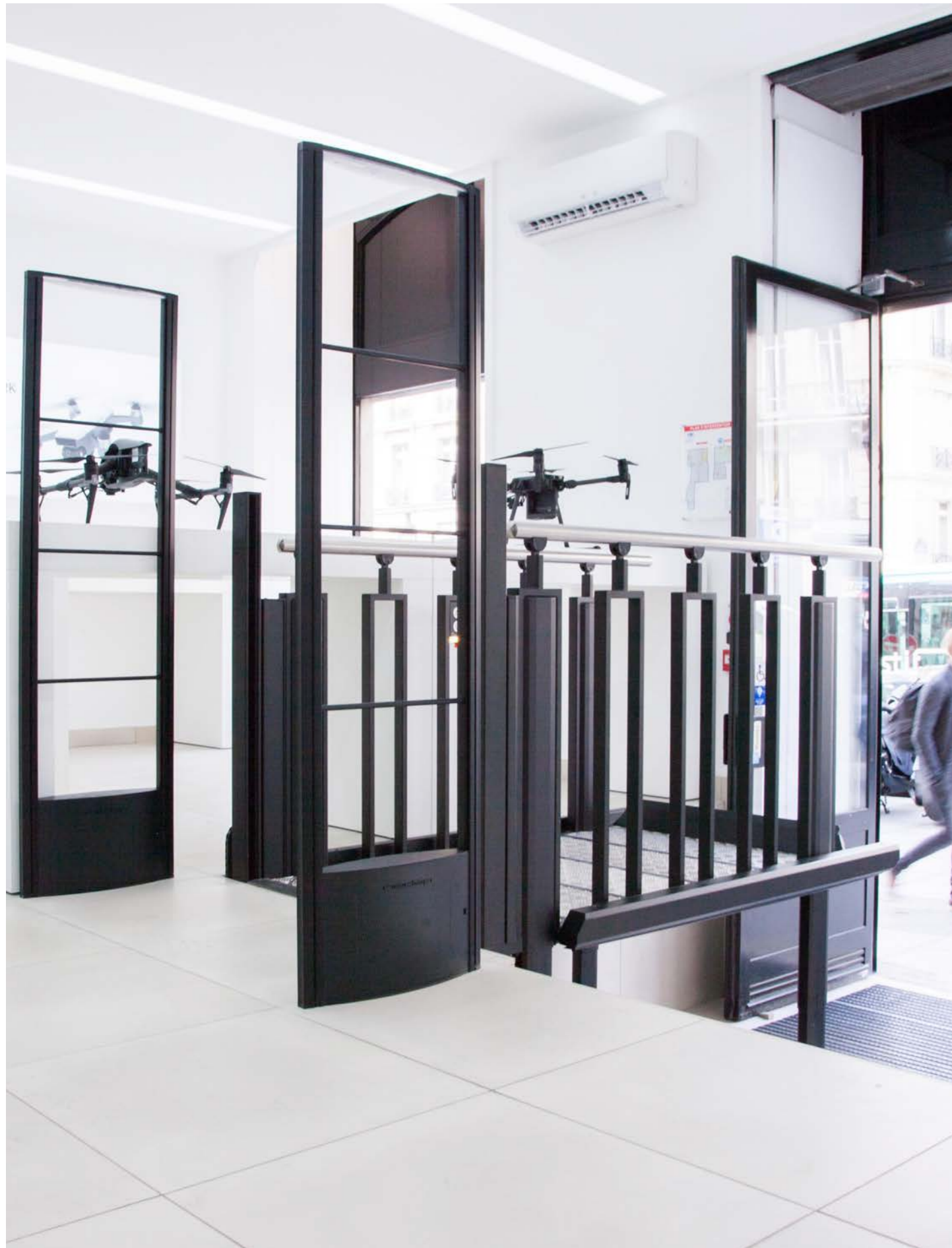
The design is created in special colour (dull black) and the steps are equipped with aluminium chequer plates which offer an industrial look due to the rustic aluminium surface. The special black colour of the construction, the balustrades and the round handrails in stainless steel altogether suggest the requested minimalistic and high-tech look of the FlexStep stairlift.



SMART CONTROL

The FlexStep installed in the DJI store in Paris is mounted with an operating panel with pushbuttons fitted on one of the balustrades. The simple pushbutton panel is easy and intuitive to operate for the wheelchair user on the FlexStep.

Wheelchair users are independent of outside help as the FlexStep as standard can be operated from both levels by means of the straightforward operating panels on the wall which at the touch of a button transforms the FlexStep from a staircase to a wheelchair lift. The operating panels are wireless so that no wires are visible.



HVALS Ø

DENMARK



HVALSØ PHARMACY

Hvalsø, Denmark

- Combination of fixed staircase and stairlift
- Design with landing, balustrade and steps in the same type of wood
- Outdoor installation
- Creates accessibility and offers access to the pharmacy
- Meets legal requirement for accessibility





FLEXSTEP GIVES ACCESS TO PHARMACY

Hvalsø Pharmacy opened in 1872 in the very same building where it is located today.

The old classical building was facing a major renovation, and at the same time it was requested to increase the accessibility and access to the pharmacy.

The building housing Hvalsø Pharmacy was built at a time when typically the construction should be emphasized, and the architecture should reflect its function. Therefore, not just any modern staircase can match the façade and the charm of the building. The FlexStep solution was especially adapted to Hvalsø Pharmacy so that function as well as aesthetics meet the requirements of the owners and offer accessibility for the pharmacy's customers.

“The alternative solution was to build a ramp. It would be much cheaper, but it would also look awful. Above all, it would be a clear lack of respect for the 150-year-old pharmacy building, and I do not want to ruin the beautiful architecture.”

- Charlotte Wiberg,
Pharmacist at Hvalsø Pharmacy;
Quote published in NomecoNyt no. 3 - July 2018.



OUTDOOR INSTALLATION

The owner of Hvalsø Pharmacy wished to establish an outdoor, functional staircase solution which would not upset the historical building, and a FlexStep solution was chosen. The installation should not only have a stairlift, but also include a fixed staircase mounted in combination with a wooden landing to retain sufficient room for manoeuvre and access for wheelchair users.

The door opens with a door release button, and it is completely unproblematic for a wheelchair user to access the pharmacy.

The façade of the building has a completely new visual appearance at the entrance, where the old concrete stairs have been replaced.

DESIGN OPTIONS

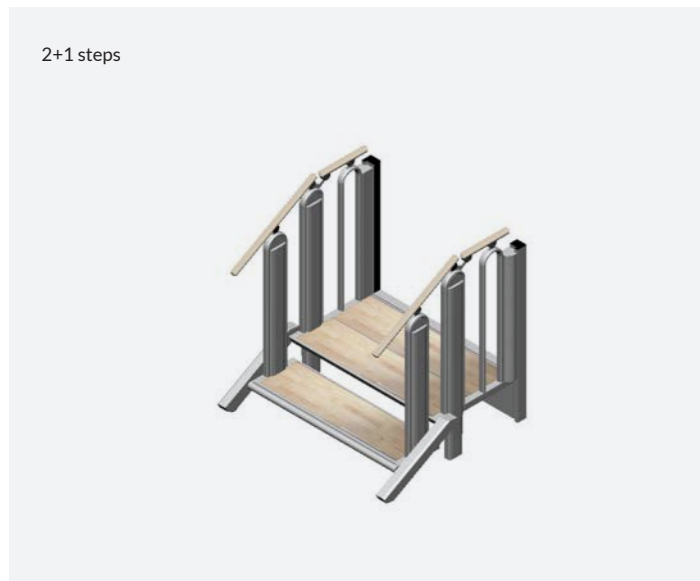
In order to create a harmony and combine function with aesthetics in the best possible manner, the FlexStep solution has been designed with solid planks used for the landing leading from the FlexStep to the entrance itself. The wood material used for landing and steps is also used for the handrails thereby offering a finish to match the complete solution.

The construction of the staircase is fashioned in painted metal. Altogether Hvalsø Pharmacy has gained a solution which matches the request for optimal accessibility for the visitors of the pharmacy, without compromising with the existing architecture of the building.



GENERAL

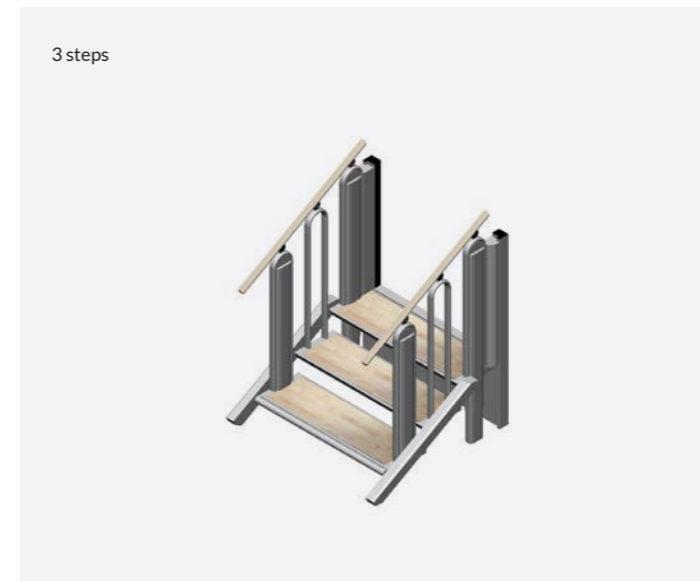
INFORMATION



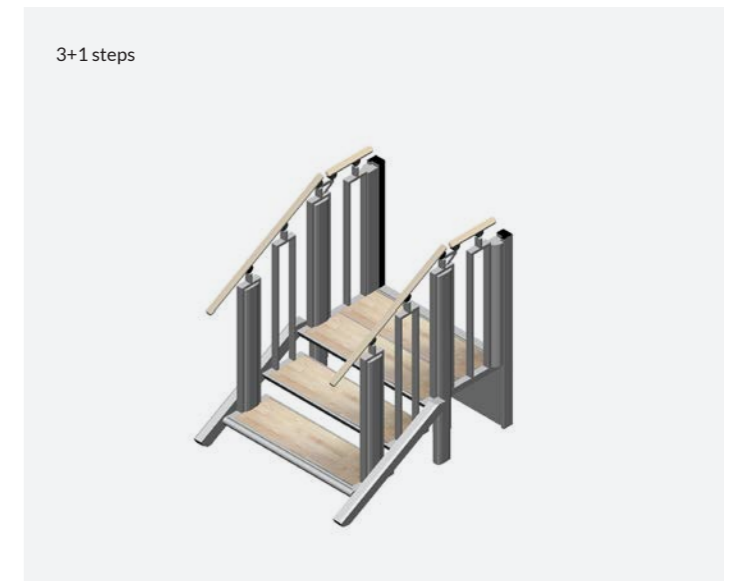
Lifting height: 240 – 370 mm; Length as platform: 900 mm



Lifting height: 240 – 370 mm; Length as platform: 1210 mm



Lifting height: 360 – 740 mm; Length as platform: 915 mm



Lifting height: 360 – 555 mm; Length as platform: 1190 mm

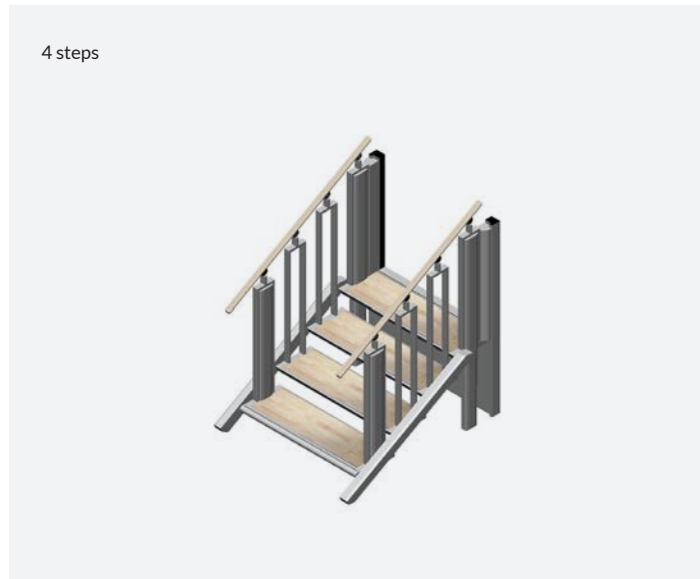
A FlexStep for all situations

Each FlexStep is designed for the specific project. As standard, the FlexStep is available in eight sizes which are customized to the specific difference in levels. All models are available in four different standard widths.

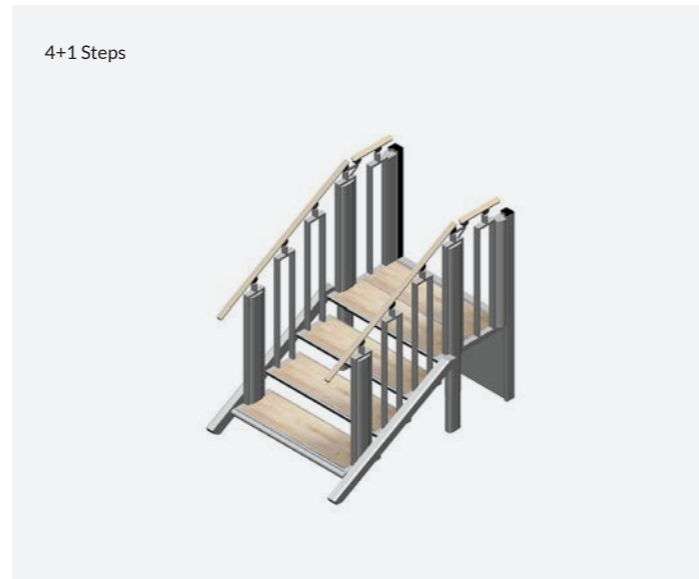
Try the online configuration of your own FlexStep: www.liftup.dk/lpc

Lifting capacity: 400 kg
 Lifting speed: Approx 40 mm/sec.
 Step widths: 700mm / 800mm / 900mm / 1000mm (internal)
 Installation width: Step width + 300 mm
 Tare weight: 120 – 160 kg
 Duty cycle: 2 min. operation every 5 min.

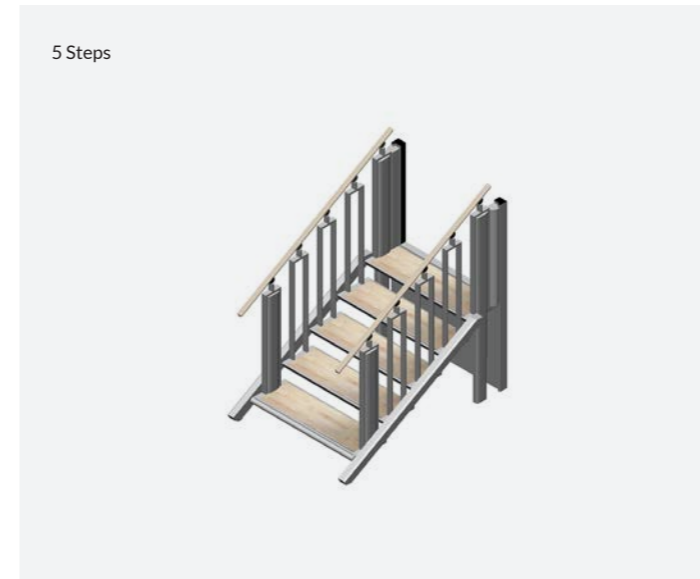
Noise level: < 70 dB
 Connection: 230 VAC (charging)
 Battery backup: Yes
 Approval: CE marking according to Machinery Directive 2006/42/EC
 Operation: Hold-to-run control, pursuant to legal regulations
 Call stations: Several options, see www.liftup.dk



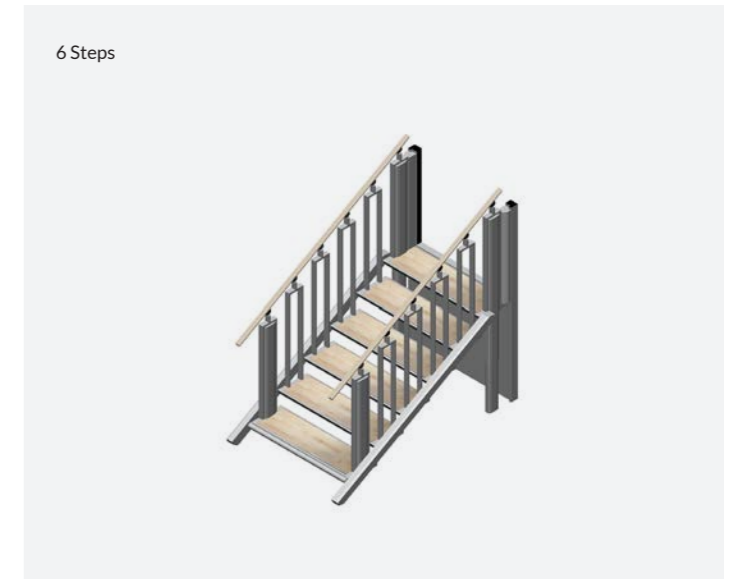
Lifting height: 480 – 925 mm; Length as platform: 1220 mm



Lifting height: 480 – 740 mm; Length as platform: 1495 mm



Lifting height: 600 – 1110 mm; Length as platform: 1525 mm



Lifting height: 720 – 1250 mm; Length as platform: 1830 mm

Lifting capacity: 400 kg
 Lifting speed: Approx 40 mm/sec.
 Step widths: 700mm / 800mm / 900mm / 1000mm (inside)
 Installation width: Step width + 300 mm
 Tare weight: 120 – 160 kg
 Duty cycle: 2 min. operation every 5 min.

Noise level: < 70 dB
 Connection: 230 VAC (charging)
 Battery backup: Yes
 Approval: CE marking according to Machinery Directive 2006/42/EC
 Operation: Hold-to-run control, pursuant to legal regulations
 Call stations: Several options, see www.liftup.dk

Lifting capacity: 400 kg
 Lifting speed: Approx 40 mm/sec.
 Step widths: 700mm / 800mm / 900mm / 1000mm (inside)
 Installation width: Step width + 300 mm
 Tare weight: 120 – 160 kg
 Duty cycle: 2 min. operation every 5 min.

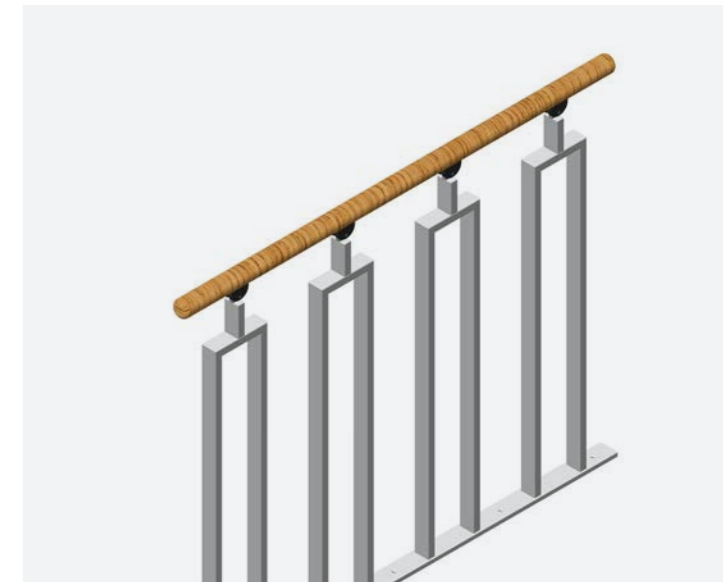
Noise level: < 70 dB
 Connection: 230 VAC (charging)
 Battery backup: Yes
 Approval: CE marking according to Machinery Directive 2006/42/EC
 Operation: Hold-to-run control, pursuant to legal regulations
 Call stations: Several options, see www.liftup.dk



Standard step inserts
Ash, beech, cherry, mahogany, oak, pine, walnut, teak and aluminium plate.



Standard handrails
Ash, beech, cherry, mahogany, oak, pine, walnut, teak, brass, stainless steel, painted steel.



Flexibility in look and design

The FlexStep is designed to merge into the environment where it is installed. We offer numerous options to customize step inserts and handrail types, and also balustrades, materials and colours can be tailored to a perfect match. You may even supply your own flooring materials for the steps to achieve the optimal integration into your décor.

Balustrades

Balustrades are available with square or round top.

- Round balustrades: Flat oval steel profiles with rounded top
- Square balustrades: Rectangular steel profiles with flat top

Protective railing and balustrades for existing building components are available as supplementary equipment, to complete the installation.



Vertical safety barrier – top landing

Liftup has designed a vertical safety barrier solution which prevents an accidental fall from the top landing onto the platform or stairs. In most countries, legal regulations stipulate that such a safety function must be established when the difference in levels exceeds 500 mm. The vertical safety barrier is discretely hidden between the FlexStep and the front wall and is only visible when the safety functionality is required.



Access ramp and safety device combined in one solution

An access ramp is discretely folded under the lowest step of the FlexStep. Whenever the FlexStep is in use as a wheelchair lift, the ramp unfolds and gives the wheelchair user access to the platform. The ramp rises and locks before the FlexStep starts moving as a platform and works as an elegant safety device preventing rolling off during the elevation.



Anti-squeeze protection

All movable parts of the FlexStep are equipped with fast acting pressure activated plates which will stop the movement of the FlexStep if an object is situated below the platform. As an additional feature, the FlexStep will move away from the obstruction which may then be easily removed.



Infrared light curtain as additional safety

As standard, the FlexStep is equipped with an advanced light curtain monitoring all gaps between the stairs and the surface of the platform, to prevent crushing between the stairs and unintentional movement when a wheelchair is on the platform.

Safety above all

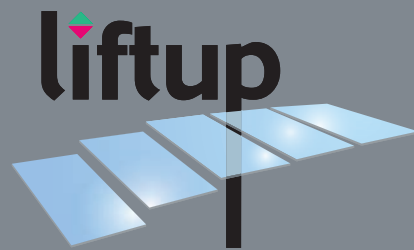
The FlexStep is a very safe product thanks to the many safety measures guaranteeing non-hazardous operation of the convenient platform lift. The product comprises four intelligent, synchronized engines safeguarding a stable and safe transportation between levels, and as standard the FlexStep is furnished with all necessary safety measures.

The FlexStep is CE marked according to the EU Machinery Directive and thus meets the strictest safety regulations.

Moreover, extra safety features as 2-way communication equipment, alarm bell, a swing door at the top landing and audio information for the user are available.

At Liftup A/S we work consistently with innovation and development of welfare technology products as our cornerstone. Liftup was founded in 2003 based on the idea of the FlexStep solution, the concept of a staircase and a wheelchair lift in one product. Liftup is a wholly privately-owned Danish enterprise located in Støvring/Denmark with a global distributor network and subsidiaries in several countries.

Aesthetics, design and safety are essential in everything we do within the field of welfare technology. We do not make machines, we offer welfare aids that create equal opportunities for all.



WWW.LIFTUP.DK