

# TRACKWHEEL

SPARE PARTS

SINGLE ARM



Pricelist is valid from 1.01.2025 until the new one is published.

# INFORMATION

---



## **Transportation costs**

We deliver free of charge from a net order value of 50 euros. Below a net order value of 50 euros, there are packaging and freight costs of 15 euros. Until full payment has been received all products remain the property of Rehasense Sp. z o.o.



## **Customer Service MON-THUR 8:00-16:00; FR 8:00-15:00**

**+48 668 027 062**



Please send orders by email to the following address: [info@rehasense.com](mailto:info@rehasense.com)  
This is the quickest and easiest way. Thanks very much! Your Rehasense customer service



# ORDER FORM

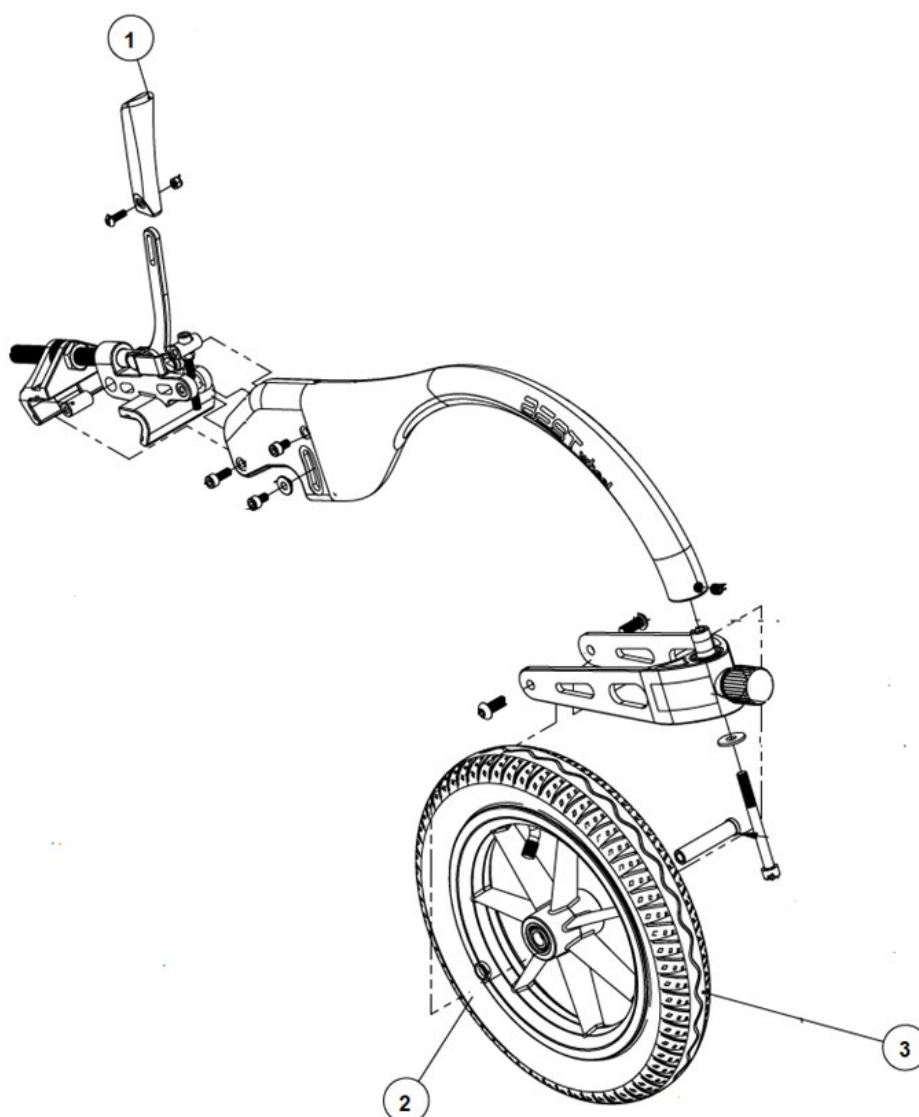











Please help us save paper. Please send your orders by e-mail to [info@rehasense.com](mailto:info@rehasense.com). Thank you very much!

If you want to place your order by fax, please use the following fax number: + 49 2821 391 4308

Copmany name :	Date:
Customer ID nb:	Order nb:
Contact person:	<b>Delivery address</b>
E-Mail:	Street & House nb:
Tel./Fax:	Zip code & Town:

## TECHNICAL DRAWING FOR TRACKWHEEL SINGLE ARM



No.	Picture	Item description	Item no	Order qty	
1		Adjustable handgrip	673218		
2		Tyre 12 1/2" x 2 1/4", Black, 2.5 bar	411202		
3		Tube 12 1/2" x 2 1/4", with 90/45 car valve	451214		
4		Rear claw of single arm Clamp, for foot rest tube, Black, with plastic pads	EBX01A		
5		Rear claw of single arm Clamp, for foot rest tube narrow version, Black, with plastic pads	EBX01B		
6		Rear claw of single arm Clamp, for foot rest plate, Black, with plastic pads	EBX01C		
8		Front claw of one arm Clamp, for D15-D25 tube of foot rest, Black, with plastic pads	EBX02A		
9		Front claw of one arm Clamp, for D25-D32 tube of foot rest, Black, with plastic pads	EBX02B		
10		Front claw of one arm, for D15-D25 tube of foot rest, cut step on both sides	EBX02C		

**NOTE:** We do not offer cross and side frames as spare parts. With good reason we classify such damages as dangerous wand total loss. It means the user needs a new rollator. Safety is the highest priority.



REHASENSE MOBILITY CANADA LTD  
137 BUTTERMILL AVENUE  
CONCORD, ONTARIO, L4K 3X5  
CANADA  
☎ +1 289 654 1901  
✉ INFO.CANADA@REHASENSE.COM

REHASENSE ITALY SRL  
VIALE DELLE INDUSTRIE 5  
20044 ARESE (MI) ITALY  
☎ +39.02.99 77 08  
✉ INFO.ITALY@REHASENSE.COM

REHASENSE DEUTSCHLAND GMBH  
STERNBERGER STRASSE 12,  
32699 EXTERTAL,  
GERMANY  
☎ +49 2821 590 8587  
✉ INFO@REHASENSE.COM

REHASENSE DENMARK  
GLARMESTERVEJ 16 A, ST. TV.  
8600 SILKEBORG,  
DENMARK  
☎ +49 176 588 788 01  
✉ INFO@REHASENSE.COM

REHASENSE UK LIMITED/IRELAND  
UNIT 2, HARMONY HOUSE  
TRELEIGH INDUSTRIAL ESTATE  
REDRUTH, CORNWALL TR16 4DE  
UNITED KINGDOM  
☎ +44 (0) 333 220 0704  
✉ UKADMIN@REHASENSE.COM

REHASENSE SP. Z O.O.  
SULEJOWSKA 45G  
97-300 PIOTRKÓW TRYBUNALSKI  
POLAND  
☎ +48 880 331 272  
✉ INFO@REHASENSE.COM

REHASENSE BENELUX  
MARKEWEG 81  
8398GM BLESIJKE,  
NETHERLANDS  
☎ +31 653 837 211  
✉ INFO@REHASENSE.NL

REHASENSE SVERIGE AB  
POLHEMSGATAN 28, SE-392 39 KALMAR  
SWEDEN  
☎ +46 722 325 090  
✉ MATS.LAVEBORN@REHASENSE.COM

REHASENSE CHINA  
NO.289, WENGJIAO ROAD  
XINYANG INDUSTRIAL AREA  
361022 HAICANG, XIAMEN,  
CHINA  
☎ +86 592 688 4014  
✉ EVELYN.CHEN@REHASENSE.COM

REHASENSE KOREA  
1F. 338-46, DONGBUSUNHWAN-RO,  
WONJU-SI 26454 GANGWON-DO,  
REPUBLIC OF KOREA  
☎ +82 070 4216 3429  
✉ JONGSUNG.KIM@REHASENSE.COM

REHASENSE NEW ZEALAND  
UNIT 4, 260 APIRANA AVENUE  
GLEN INNES, AUCKLAND, 1072,  
NEW ZEALAND  
☎ +09 555 3111  
✉ NZ-INFO@REHASENSE.COM

REHASENSE USA  
1333 BURR RIDGE PARKWAY, SUITE 200  
BURR RIDGE, IL 60527,  
USA  
☎ +1 630 756 3099  
✉ INFO-USA@REHASENSE.COM

REHASENSE MENA  
QETAF MEDICAL EST  
3599 PRINCE MOHAMMED BIN  
ABDULAZIZ ST,  
SAUD LANGAWI CENTER, AL ANDALUS  
JEDDAH 23326,  
SAUDI ARABIA  
☎ +96 650 664 1993  
✉ SALES-MIDDLE-EAST@REHASENSE.COM

REHASENSE COLOMBIA  
CALLE 171 # 21 A 47  
BARRIO LA URIBE, BOGOTÁ  
COLOMBIA  
☎ +57 3153118652  
✉ IVANUMANA@REHASENSECOLOMBIA.COM

REHASENSE AUSTRALIA PTY LTD  
☎ +61 475 856 207  
✉ WERNER.PETZER@REHASENSE.COM

