



MAJ le 25/03/2019

# Kinéris

## User Manual

English



WINCARE  
g r o u p



ASKLÉSANTÉ



## ENGLISH

### INSTRUCTIONS

Primary prevention of bedsores involves adjusting pressure points on the cushion every 2 hours to prevent vessels being compressed for too long with respect to bone projection and to allow tissue drainage.

### PRINCIPLE

To prevent bedsores in buttock areas in contact with the cushion by supporting bone projections and reducing shear forces.

### CHOICE OF PRODUCT

Individual at risk of bedsores with no stability problems: single compartment cushion  
Individual at risk of bedsores with stability problems: multi compartment cushion

### INDICATIONS

High risk of bedsores for individuals in sitting position with reduced mobility, activity, sensitivity and/or history of contact bedsores.

### CONTRAINDICATIONS

Bedsores in pressure area (except upon medical advice)

### INSTRUCTIONS FOR USE

The cushion must be installed with the cells towards the top. It must be used exclusively with the protective cover provided by ASKLE SANTE.

Inflation is done using the manual pump supplied with an integral manometer. Optimum adjustment of inflation pressure must be done in line with the Height/Weight correspondence table supplied with the manometer. Write the pressure value on the user leaflet.

For multi-compartment cushions, inflation must be done using the same method ensuring that there is no damage by a manual test deemed to be supplementary:

- Sit the patient on the previously inflated cushion
- Adjust inflation pressure taking the individual's physiology into account (asymmetry, obliqueness of pelvis) and indicative values according to the correspondence table provided.
- Check that the cushion has sufficient air by placing your hand with palm facing upwards between the buttock area and the base. A sufficiently inflated cushion has a secure pneumatic base with between 1.5 and 2 cm of air under ischiums.
- This step must be repeated on each of the compartments

### TECHNICAL DATA

Patient weight (min.-max)	40 – 150 Kg	
Product weight	From 1.5 kg to 2.5 kg depending on reference	
Admissible maximum pressure	100 mBar	
Cushion material	Neoprene	
Cover material	Polyester / Polyurethane +elastane on surface	
Maximum pressure measured (Laboratoire National d'Essai – France) 1g/cm <sup>2</sup> = 0,75 mm Hg	Patient weight	Maximum pressure
	40 kg	43 g/cm <sup>2</sup>
	60 kg	72 g/cm <sup>2</sup>
	80 kg	89 g/cm <sup>2</sup>

Item treated with a biocidal substance that is safe for the user. [www.winncare.fr](http://www.winncare.fr)

### MAINTENANCE/DISINFECTION

Cushion						
	Moderate washing up to 90°C	Do not use chlorinated products	Do not iron	Do not dry clean	Do not machine dry	Use an approved disinfectant/detergent
Cover						
	Moderate washing up to 90°C	Maximum chlorine concentration of 5000ppm	Do not iron	Do not dry clean	Dry with reduced thermal restriction	Use an approved surface disinfectant/detergent

### PRECAUTIONS FOR USE

When washing, ensure that valves are sealed.

Avoid regular use of a chlorine-based solution.

Do not allow direct contact of the neoprene cover with corrosive or cutting products.

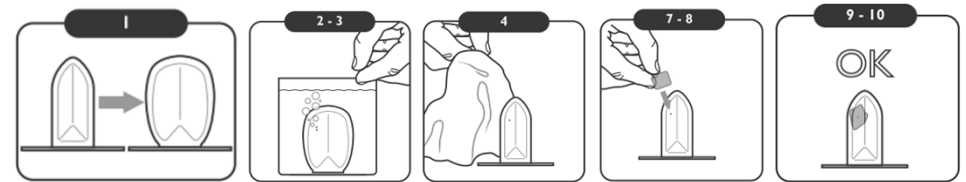
Re-adjust cushion inflation in the event of large temperature or altitude discrepancies.

If taking a shower in the chair, use the cushion without the cover or replace it with a dry protective cover.

### RE-USE

Before use by another person, clean and disinfect the cushion with a detergent/disinfectant We recommend changing the cover.

### MAINTENANCE AND REPAIR



Operations to be done in a clean, dry place with hands previously washed with soap.

Recommendation: Consult your service provider for maintenance operations if required.

1 - Over inflate the cushion.

2 - Immerse it in a container filled with clear water to find the leak. For this, mark where the bubbles are escaping from. In the event of a tear, go directly to step 5.

3 - Mark the hole to see the leak better.

4 - Dry the cushion using a clean, dry, non-fluffy cloth. The surface must be completely CLEAN AND DRY for proper adherence of the rubber repair patch.

5 - Open the sachet containing the compress impregnated with alcohol at 70°, unfold it and apply extensively around the hole (surface bigger than a Teuro coin).

6 - Wait for 1 minute

7 - Remove the rubber repair patch from its support touching the sticky surface as little as possible.

8 - Apply the rubber repair patch by pressing down strongly. Then use a rounded implement (e.g. back of a teaspoon) starting from the middle

towards the edge. Remove all bubbles until total transparency of the rubber repair patch is obtained.

9 - Replace the cover.

10 - Adjust inflation using the correspondence table provided with the pressure manometer.

The rubber repair patch must be stored between 0°C and 60°C and used between 15°C and 45°C.

After repair, use of the cushion shall be limited to 15 days. This period should allow you to find a replacement so as to send the repaired product to the Askle after-sales service.

### USAGE AND STORAGE CONDITIONS

Pneumatic supports with telescopic cells must ideally be stored flat, away from direct light and excessive humidity.

	Use	Storage
Temperature range	15°C – 45°C	10°C – 50°C
Humidity range	30% - 70%	10% - 90%

### DISPOSAL OF MEDICAL DEVICES

Do not dispose of the product in the countryside outside of dedicated locations.

### GUARANTEE

The guarantee duration for KINERIS and OPTIMAIR cushions is three years. This guarantee starts from the date of purchase from your distributor. In the case of single patient use, the guarantee relates to the support and its protective cover. In the case of multi-patient use, the duration of the protective cover is one year.

The guarantee does not cover normal wear of the product and its protective cover; it does not substitute legal guarantees. Contact your distributor about a defective product. He/she will start the necessary steps with our company to proceed with either repair or exchange.

Kinéris™	V367	0,8 Kg	V3610	36	28,5 x 28,5	40 → 55	30 → 34	30 → 34
	V427	0,9 Kg	V4210	42	28,5 x 33	40 → 65	30 → 34	34 → 38
	V497	1,1 Kg	V4910	49	33 x 33	50 → 60	35 → 38	35 → 38
	V567	1,2 Kg	V5610	56	33 x 37,5	40 → 65	35 → 38	39 → 42
	V667	1,1 Kg	V6610	36	36 x 36	50 → 75	35 → 39	35 → 38
	V647	1,3 Kg	V6410	64	37,5 x 37,5	50 → 75	39 → 42	39 → 42
	V727	1,4 Kg	V7210	72	37,5 x 42	50 → 85	39 → 42	43 → 46
	V817	1,6 Kg	V8110	81	42 x 42	55 → 90	43 → 46	43 → 46
	V907	1,8 Kg	V9010	90	42 x 46,5	85 → 120	43 → 46	46 → 50
	V677	1,3 Kg	V6710	42	43 X 36	50 → 85	40 → 46	35 → 38
	V777	1,4 Kg	V7710	49	43 x42	50 → 85	40 → 46	42 → 45
	V107	2,1 Kg	V1010	100	46,5 x 46,5	110 → 120	47 → 51	46 → 50

	10 x 7 x 17 cm	0,33 Kg

